

2013-2014 PACK 802 ORGANIZATIONAL CHART

CHARTERED ORGANIZATION
ROCK POINTE CHURCH

ORGANIZATION REPRESENTATIVE
ALAN MICHAEL

FRONTIER TRAILS DISTRICT
GREG BROCK, D.E.

LONGHORN COUNCIL

PACK COMMITTEE CHAIRPERSON
DAVE CAVER

- ADMINISTRATIVE**
AMBER GELDERSMA
- ADVANCEMENT**
MICHELE LONG
- MEMBERSHIP**
ERIN POPPENGER
- PACK TRAINER**
SHEILA WARD

- FUNDRAISING**
- POPCORN KERNEL**
- CAMP CARDS**
KRIS CHIONH
- CANTEEN**

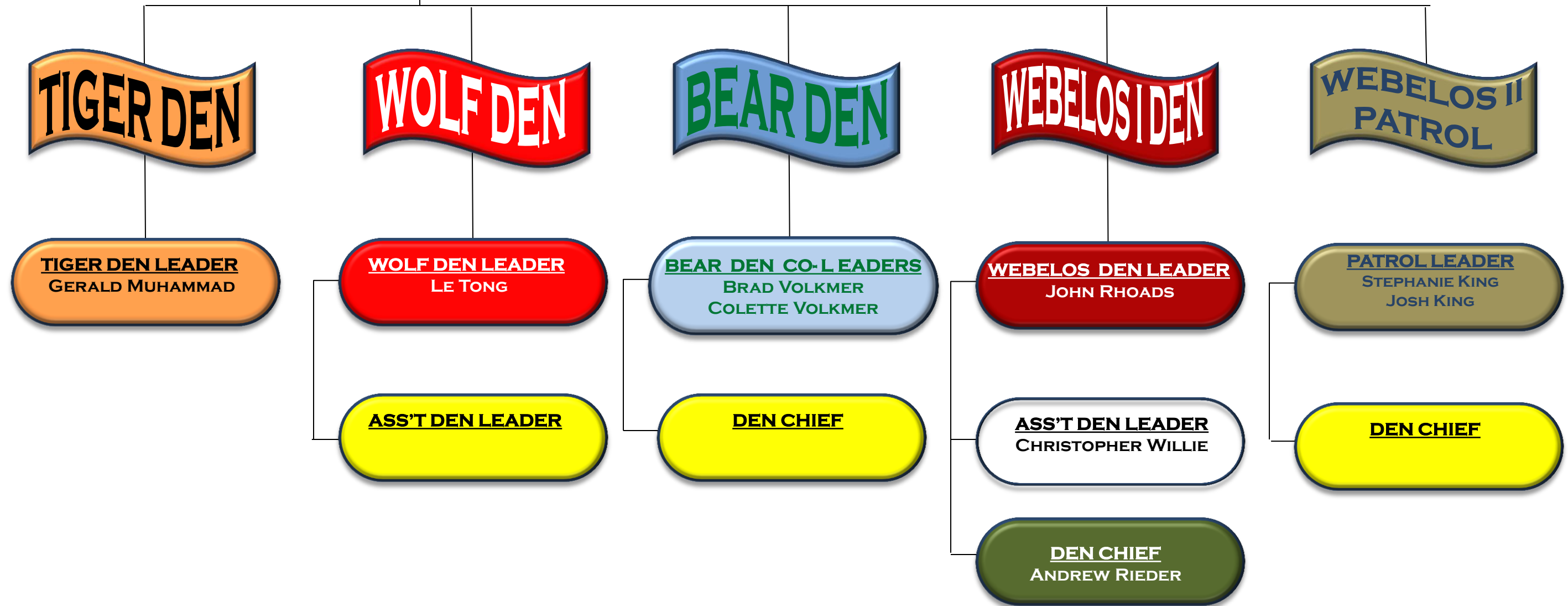
- ACTIVITIES**
- FINANCE / TREASURER**
KATIE CAVER
- RACE EVENTS**
 - RAINGUTTER REGATTA**
 - PINEWOOD DERBY**
JONATHAN MILLER
 - SPACE DERBY**
- CAMPING**
 - PACK FALL CAMPOUT**
CHRIS MILLER
 - SPRING PACK CAMPOUT**
STEVE MOORE
 - HIGH ADVENTURE**
- PACK EXCURSIONS**
 - SUMMER DAY CAMP**
STEPHANIE KING
 - SPORTING EVENTS**
RODNEY NIEMUTH
- COMMUNITY EVENTS**
 - JULY 4TH PARADE**
LAURA RAMIREZ
 - SCOUTING FOR FOOD**
SANDRA RHOADS
 - EARTH DAY**
 - ADOPT-A-SCHOOL: EP RAYZOR**
LAURA RAMIREZ
 - ADOPT-A-SCHOOL: BLANTON**
SANDRA RHOADS
 - BLUE & GOLD BANQUET**
LAURA RAMIREZ






Revised August 12,
2013

- CUBMASTER**
AARON WARD
- ASS'T CUBMASTER**
LE TONG
- ASS'T CUBMASTER**
ERIN POPPENGER

2013-2014 PACK 802 ORGANIZATIONAL CHART (CONT')



Key to Training

-  = Youth Protection Trained
-  = Baloo Trained
-  = Trained Leader